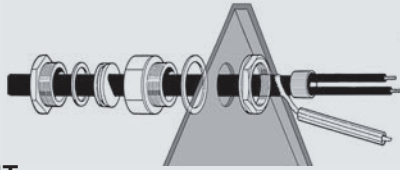
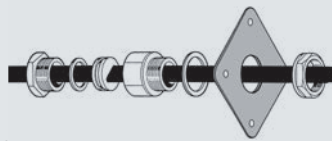


**MCA-PC****CONNECTION KIT.**

Supply side termination allowing connections to a terminal box.  
Made of cold-shrink components and also a dedicated cable gland.  
One for each cable.

**MCA-AL****THERMAL INSULATION PASS-THROUGH.**

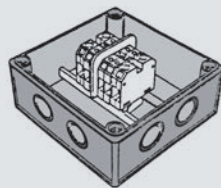
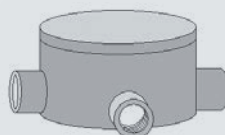
It allows the cable to pass through the metallic covering of the thermal insulation, avoiding abrasions and the moisture or water entry under the covering.  
It contains cable gland and fixing plate.  
One kit for each cable.

**MCA-PRESS****CABLE GLAND.**

To allow the cable to enter in boxes, to pass through walls etc.  
One kit per cable.

**MCA-SG****BOX.**

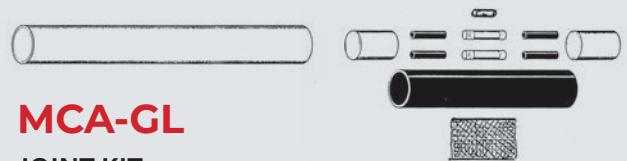
Box with IP55 degree of protection, complete of terminals. It allows the entry of 1 or more heating cables, or to branch a cable from a main tracing, or to joint cable lengths. Cables inside the box shall be MCA-PC terminated.

**GUAT 26****CONNECTION KIT FOR CLASSIFIED AREA.****MCA-PM****TERMINATION KIT.**

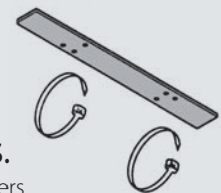
For insulating and matching the cable ends. Made from cold-shrink components.  
One kit for each termination.

**MCA-GL****JOINT KIT.**

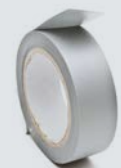
To joint cable ends or to repair damaged cables.  
It contains all the components required, including connectors.  
One kit for each cable.

**MCA-SUP****SUPPORT DEVICE FOR GUTTERS AND DOWN PIPES.**

It supports and fixes the cable in gutters and downpipes. In large gutters, requiring 2 cables laid longitudinally, it maintains the cable at the right distance.

**MCA-FV****GLASS FIBER TAPE.**

To fix the cable to the pipe, 3 turns every 0,3 m of pipe.  
Self adhesive, in 50 m rolls.

**MCA-ALL75****ALUMINIUM SELF ADHESIVE TAPE 75 MM WIDTH.**

For cable fixing, in 50 m rolls.

**MCA-EA****WARNING LABEL.**

To be applied for warning over traced items.

WARNING  
ELECTRIC  
TRACING